



# Layouts

ingenio gravio 90200

## Layouts for all demands

Our ingenio lab presses give you the opportunity to test your inks and materials extensively in order to determine the best printing parameters before commercial production. This gives you a high degree of flexibility and control over the final appearance of your print product.

To ensure that the results on the ingenio meet your requirements, we offer a wide portfolio of different cylinder specifications and gradations and advise you on their selection. Choose the right layout for your application from our layout brochure or let our experts create your individual layout. There are no limits to creativity: solid areas, color wedges, color gradients, lines in different thicknesses, logos, patterns or texts - the choice of possible layout elements is limitless.

Feel free to contact us!



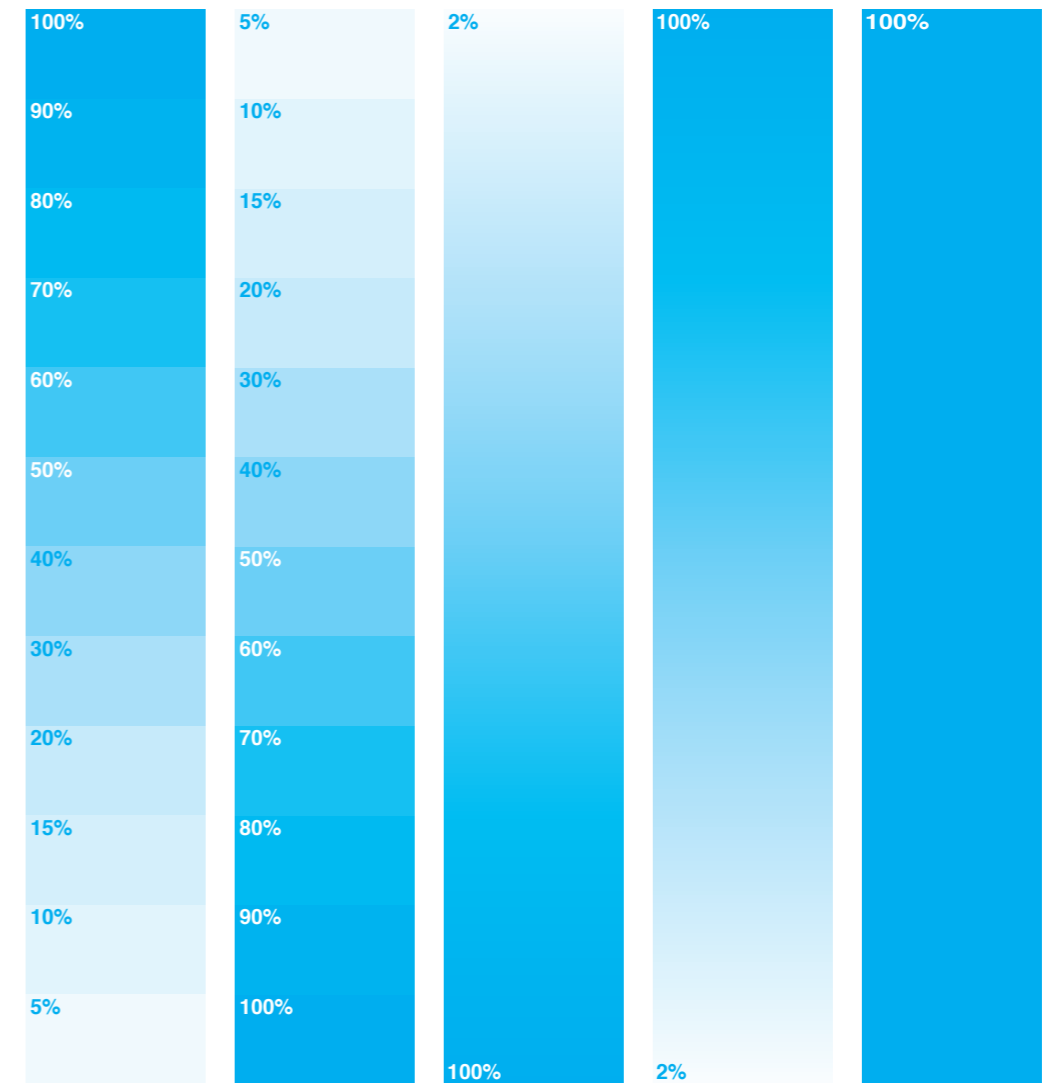
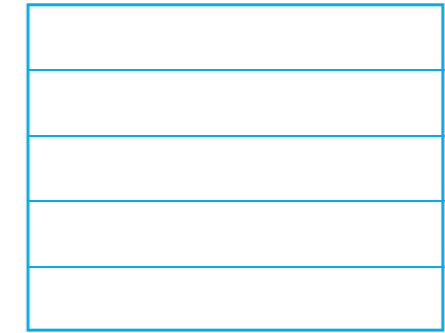
# Layout G

Layout G consists of:

- two solid areas
- one color gradation (100 % - 5 %)
- one color gradation (5 % - 100 %)
- one gradient (0 % - 100 %)
- one gradient (100 % - 0 %)

Cylinder circumference: 282.743 mm  
Cylinder width: 200.00 mm  
Printing width: 170.00 mm

## COLOR SAMPLE



# Layout H

Layout H consists of:

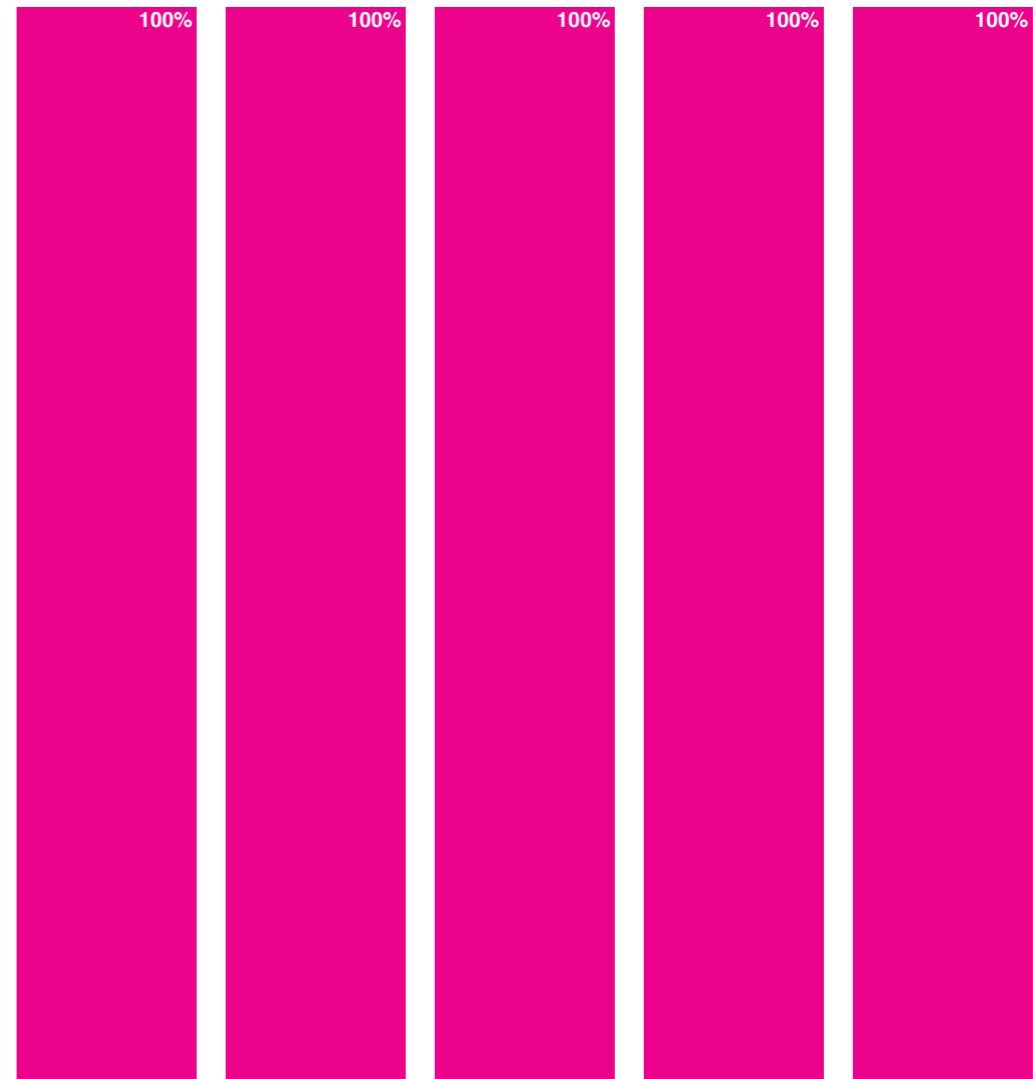
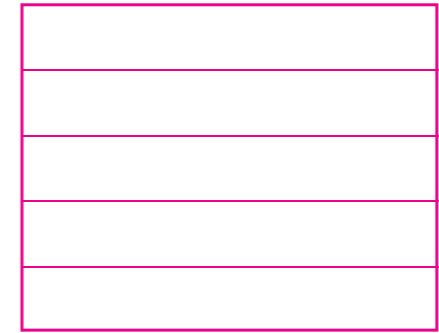
- five adjacent solid areas

Cylinder circumference: 282.743 mm

Cylinder width: 200.00 mm

Printing width: 170.00 mm

## COLOR SAMPLE



# Layout I

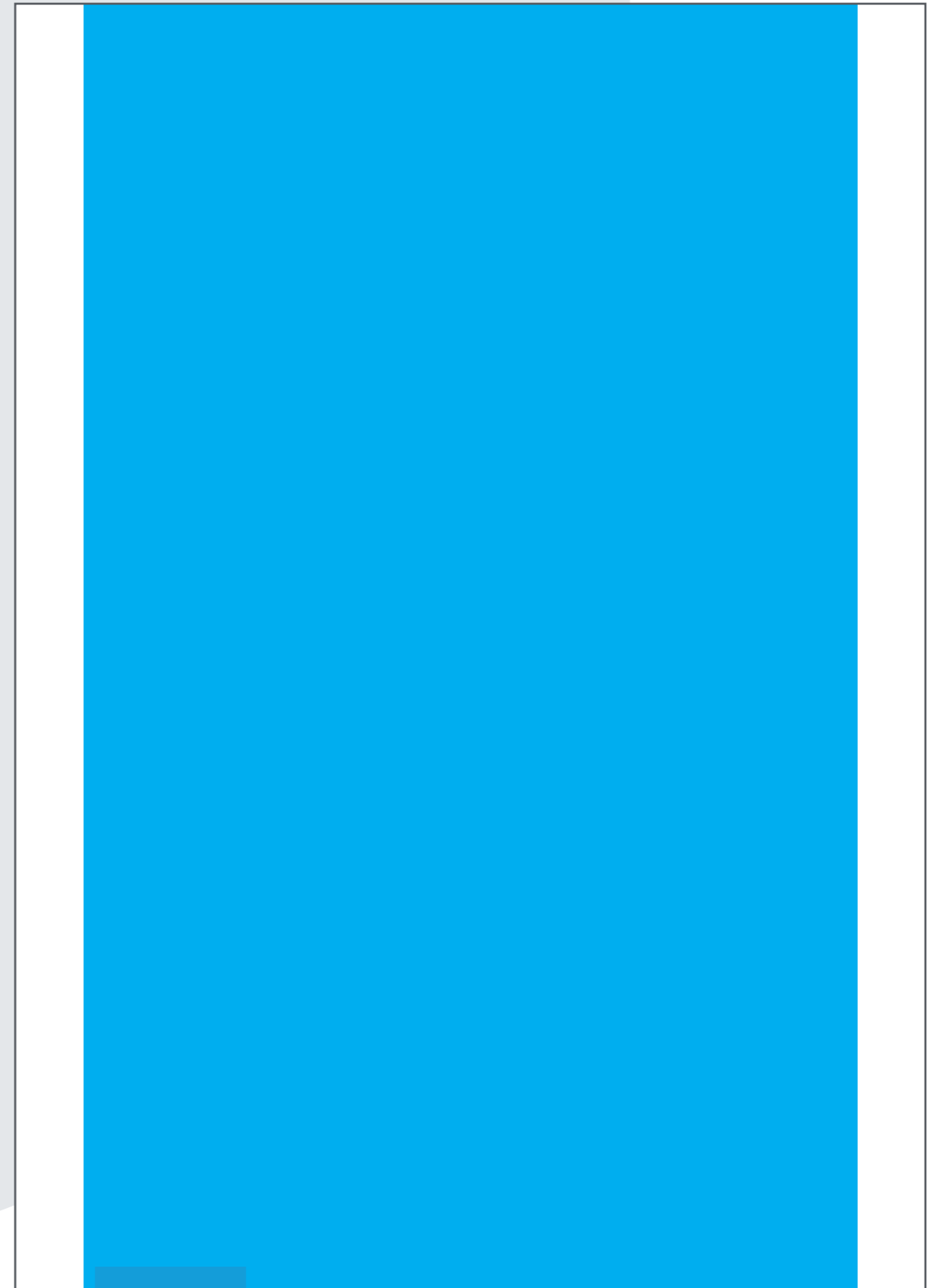
Layout I consists of:

- a large solid area

Cylinder circumference: 282.743 mm

Cylinder width: 200.00 mm

Printing width: 170.00 mm



**Remark:**

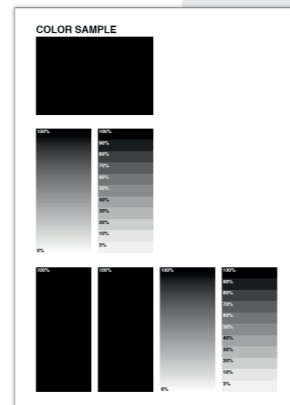
Layouts J and K are available as a combination layout.

# Layout J

Layout J consists of:

- different solid areas
- different color gradations (100 % - 5 %)
- different color gradients (0 % - 100%)

Cylinder circumference: 282.743 mm  
 Cylinder width: 200.00 mm  
 Printing width: 170.00 mm



Single image Layout J

# Layout K

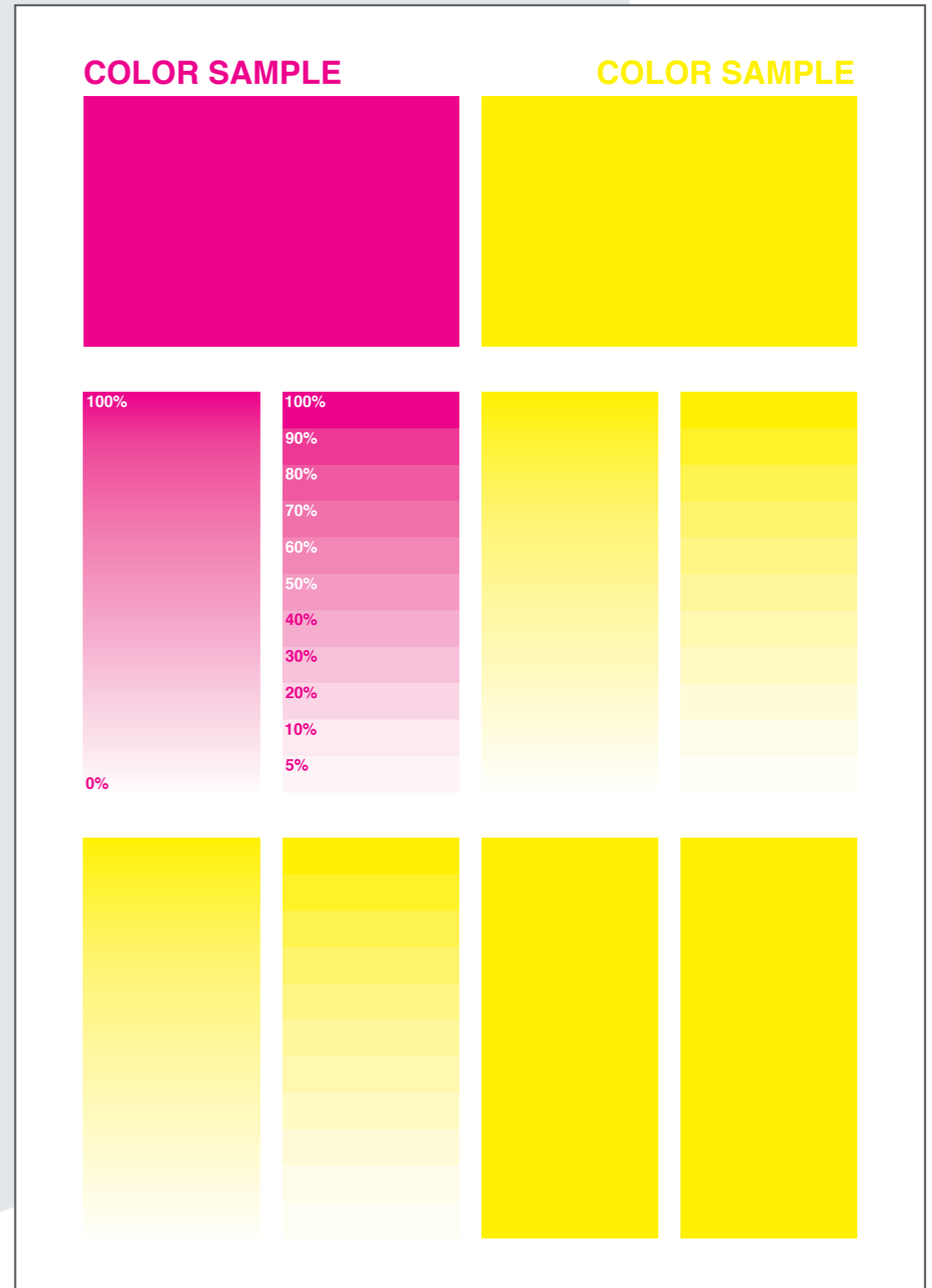
Layout K consists of:

- different solid areas
- different color gradations (100% - 5 %)
- different color gradients (0% - 100%)

Cylinder circumference: 282.743 mm  
 Cylinder width: 200.00 mm  
 Printing width: 170.00 mm



Single image Layout K

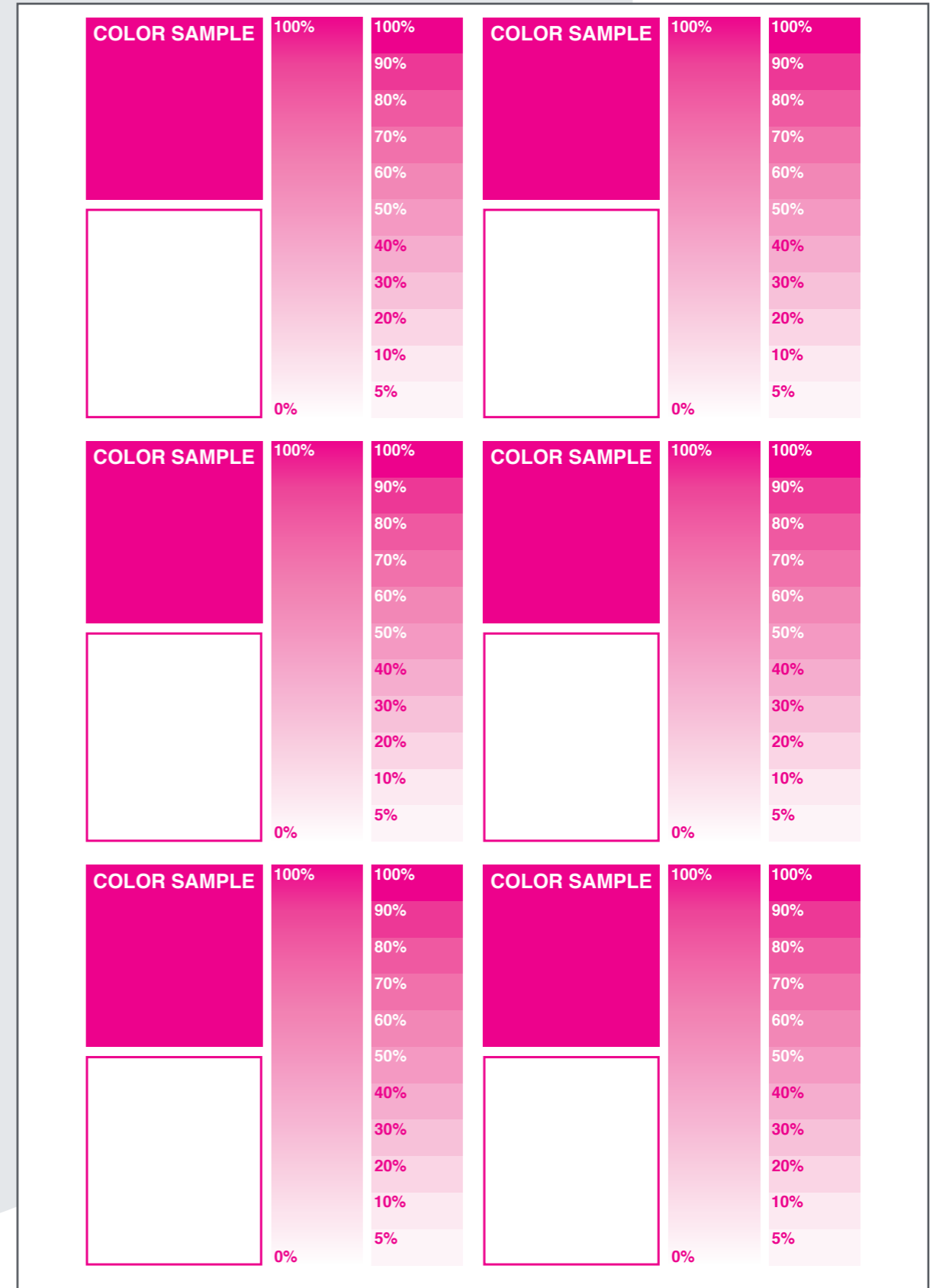


# Layout L

Layout L consists of six equal representations with each:

- one solid area
- a color gradation (100 % - 0 %)
- a gradient (100 % - 0 %)

Cylinder circumference: 282.743 mm  
Cylinder width: 200.00 mm  
Printing width: 170.00 mm

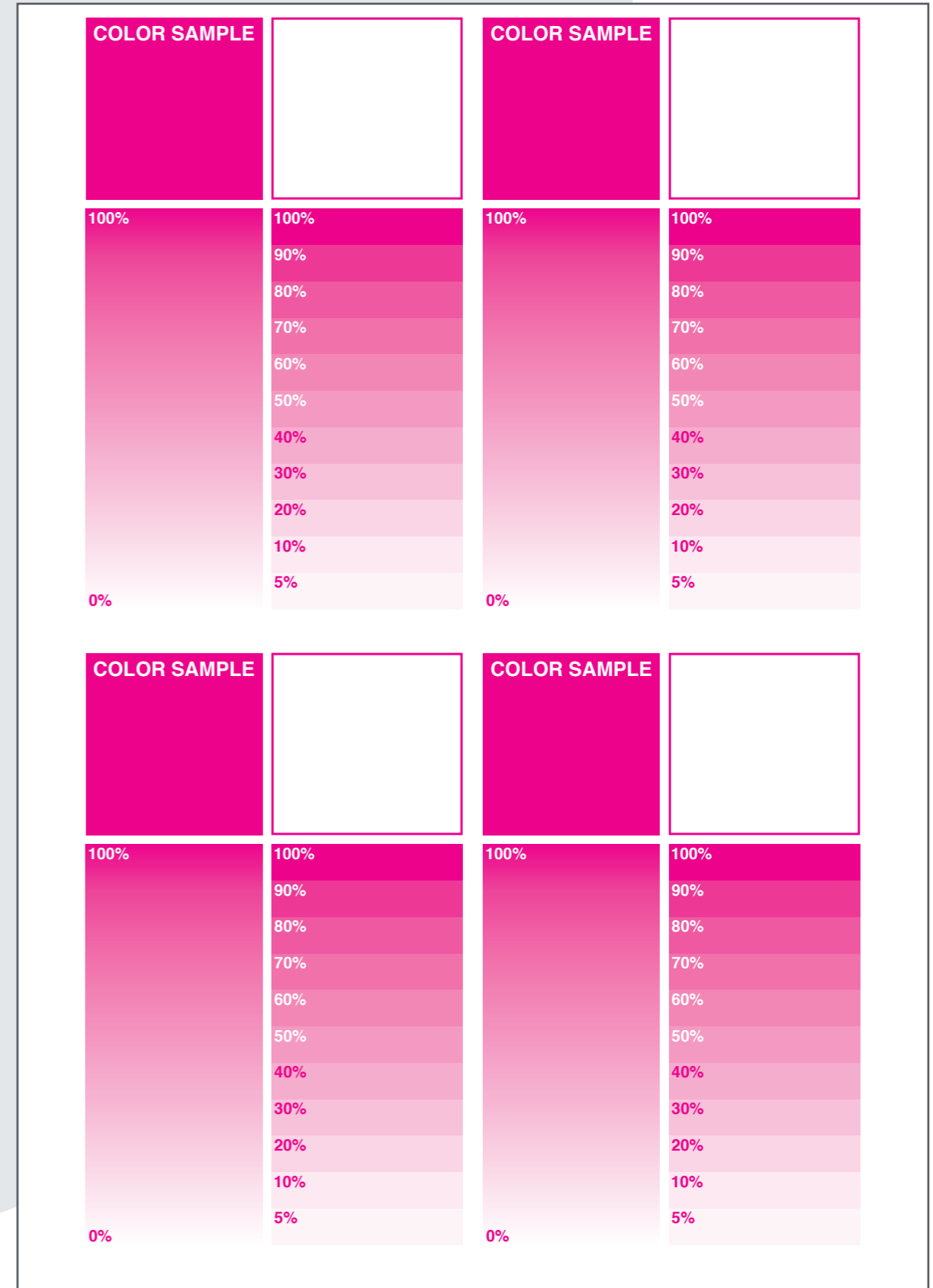


# Layout M

Layout M consists of four equal representations with each:

- one solid area
- a color gradation (100 % - 5 %)
- a gradient (100 % - 0 %)

Cylinder circumference: 282.743 mm  
Cylinder width: 200.00 mm  
Printing width: 170.00 mm



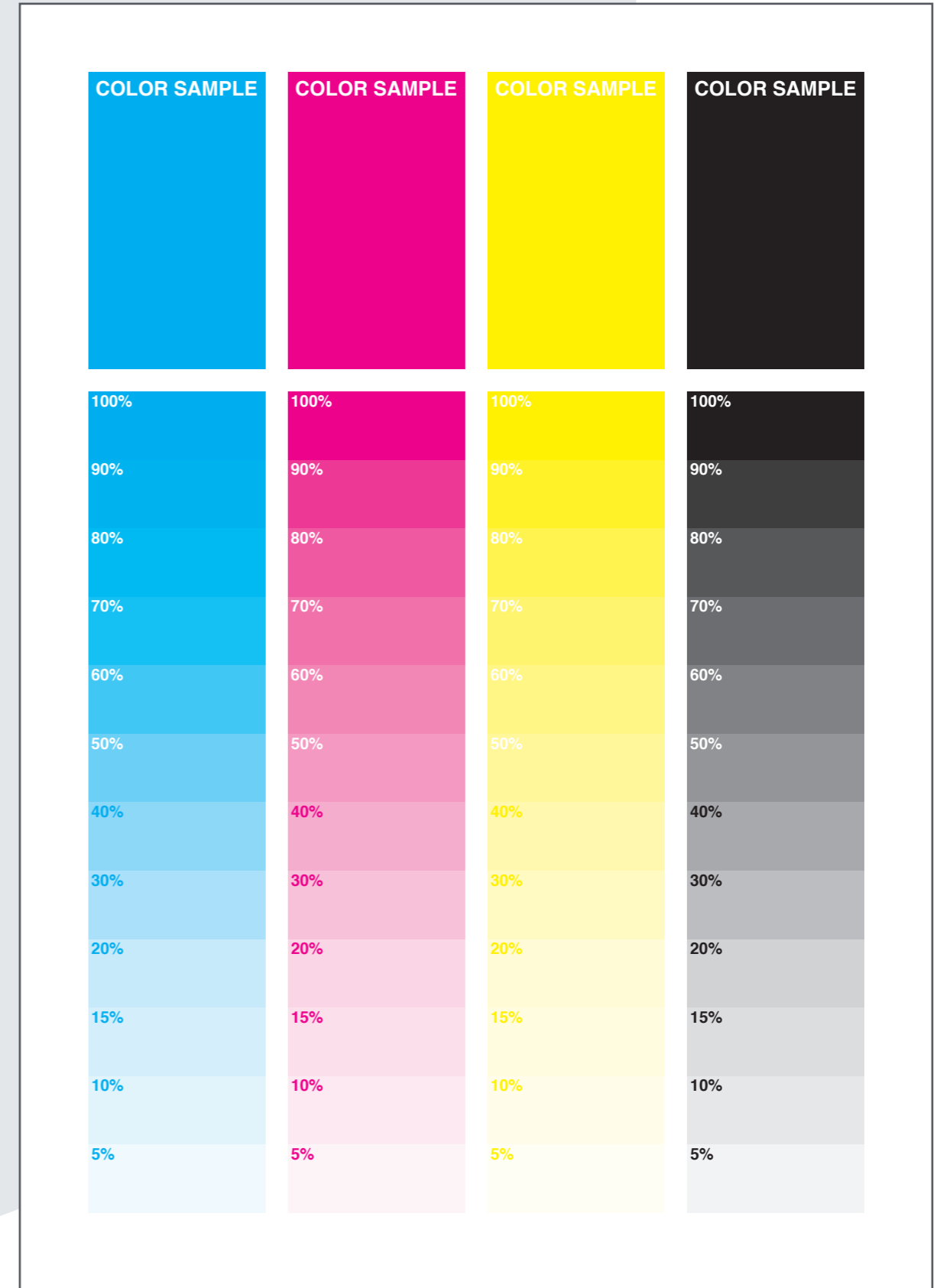


# Layout N

Layout N consists of:

- four solid areas for different specifications/colors
- four color gradations (100 % - 5 %)

Cylinder circumference: 282.743 mm  
Cylinder width: 200.00 mm  
Printing width: 170.00 mm



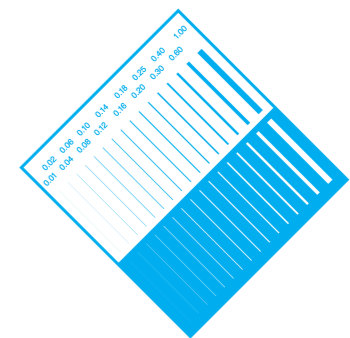
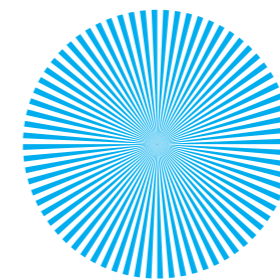
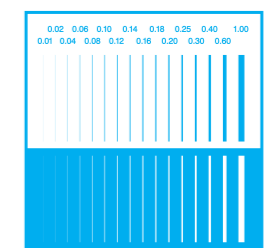
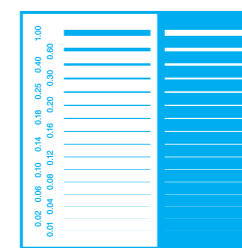
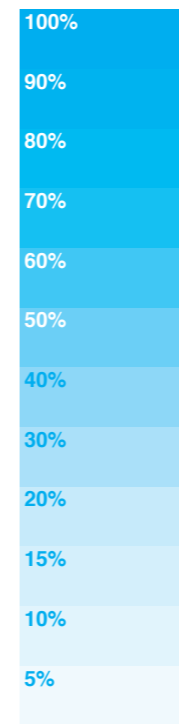
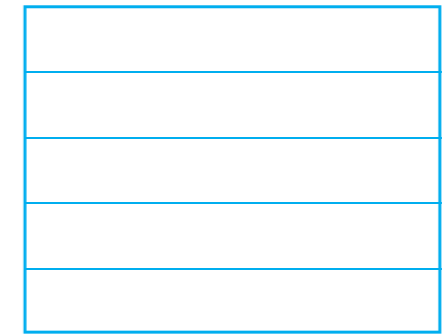
# Layout O

Layout O consists of:

- Solid areas
- Color gradation 100 % - 5 %
- Text boxes positive and negative
- Different shapes and line widths

Cylinder circumference: 282.743 mm  
 Cylinder width: 200.00 mm  
 Printing width: 170.00 mm

## COLOR SAMPLE



The quick brown fox jumps over a lazy dog.14P  
 The quick brown fox jumps over a lazy dog.12P The qui  
 The quick brown fox jumps over a lazy dog.10P The quick brown f  
 The quick brown fox jumps over a lazy dog.08P The quick brown fox jumps over a l  
 The quick brown fox jumps over a lazy dog.06P The quick brown fox jumps over a lazy dog.06P The quick brow  
 The quick brown fox jumps over a lazy dog.05P The quick brown fox jumps over a lazy dog.04P The quick brown fox jumps over a laz  
 The quick brown fox jumps over a lazy dog.03P The quick brown fox jumps over a lazy dog.02P The quick brown fox jumps over a lazy dog.01P The quick brown fox ju

The quick brown fox jumps over a lazy dog.14P  
 The quick brown fox jumps over a lazy dog.12P The qui  
 The quick brown fox jumps over a lazy dog.10P The quick brown f  
 The quick brown fox jumps over a lazy dog.08P The quick brown fox jumps over a l  
 The quick brown fox jumps over a lazy dog.06P The quick brown fox jumps over a lazy dog.06P The quick brow  
 The quick brown fox jumps over a lazy dog.05P The quick brown fox jumps over a lazy dog.04P The quick brown fox jumps over a laz  
 The quick brown fox jumps over a lazy dog.03P The quick brown fox jumps over a lazy dog.02P The quick brown fox jumps over a lazy dog.01P The quick brown fox ju

Helvetica Regular 4 Punkt  
 ABCDEFGHIJKLMNOPQRSTUVWXYZ  
 abcdefghijklmnopqrstuvwxyz +"/<=>@#%&'\*  
 Helvetica Regular 5 Punkt  
 ABCDEFGHIJKLMNOPQRSTUVWXYZ  
 abcdefghijklmnopqrstuvwxyz +"/<=>@#%&'\*  
 Helvetica Regular 6 Punkt  
 ABCDEFGHIJKLMNOPQRSTUVWXYZ  
 abcdefghijklmnopqrstuvwxyz +"/<=>@#%&'\*  
 Helvetica Regular 7 Punkt  
 ABCDEFGHIJKLMNOPQRSTUVWXYZ  
 abcdefghijklmnopqrstuvwxyz +"/<=>@#%&'\*  
 Helvetica Regular 8 Punkt  
 ABCDEFGHIJKLMNOPQRSTUVWXYZ  
 abcdefghijklmnopqrstuvwxyz +"/<=>@#%&'\*  
 Helvetica Regular 9 Punkt  
 ABCDEFGHIJKLMNOPQRSTUVWXYZ  
 abcdefghijklmnopqrstuvwxyz +"/<=>@#%&'\*

EN



Matthews International GmbH  
Gutenbergstraße 1-3  
48691 Vreden | Germany  
T: +49 2564 120

packaging@saueressig.com  
saueressig.com

Follow SAUERESSIG Group



**Matthews**  
INTERNATIONAL®

SAUERESSIG Group and SAUERESSIG Packaging are  
(MATW) Matthews International brands.

