

SAUERESSIG  
UNGRICHT |  surface solutions

Solutions for  
**versatile** surfaces.





Expertise  
and vision

## Inspired by design. Driven by technology.

Within SAUERESSIG UNGRICHT, the Matthews International Corporation is bringing together the subsidiaries Saueressig GmbH + Co.KG, UNGRICHT GMBH + CO KG, WETZEL GmbH, Saueressig Design Studio GmbH and DORNBUSCH ENGRAVING GMBH under one umbrella brand.

As the leading international supplier along the pre-press stage as well as rotogravure and embossing cylinders, SAUERESSIG UNGRICHT offers a strong technical expertise. Within the surface sector this is based in the field of tissue and hygiene products, nonwovens as well as wood, flooring and plastics processing industry.

The brand also unites a wide-ranging set of competencies in surface design. These are primarily used in the field of decor as well as in the automotive, leather or wall-paper industry.

With the merger of five traditional family businesses, Matthews combines decades of experience from different surface sectors in one new brand and therefore relies on corporate strength, tradition and reliability.

“TOGETHER WITH OUR  
CUSTOMERS WE OPEN  
A NEW CHAPTER.”

## Versatility that pays off

Our rollers are used for coating, impregnating or painting web-like goods with a wide variety of material compositions. We manufacture precision rollers for hotmelt and glue application, paint or lacquer coatings, siliconisation and many other technical coating applications.

Whether heated, cooled, smooth or engraved, with ceramic or chrome surface – we meet the challenges of our customers and deliver tailor-made solutions.

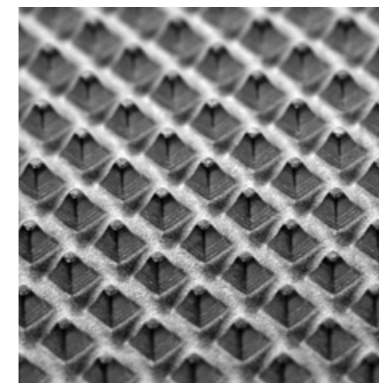
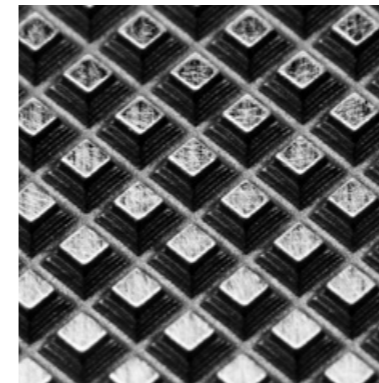
Thanks to state-of-the-art measuring instruments, we are able to determine each of our engraved ceramic and chrome anilox rollers with highest precision. Our extensive measuring methods include the documentation of the engraving parameters in an elaborate 2D or 3D visualization. Whether cell depth, web portion, pick-up volume or number of screens – we know the high demands of our customers and deliver engravings of the highest quality.

ADHESIVES

LACQUERS

PAINTS

FLUIDS



## Highest accuracy for your products

### DID YOU KNOW?

Thanks to our internal engineering expertise, we are always in a position to meet the special requirements of our customers quickly and efficiently.



# Design & Technology

surface solutions – from an idea to the final product

**Design** that inspires. We combine creativity with precision. Down to the finest detail.



**Consulting**

We attach great importance to customer proximity. In personal meetings we advise our customers in all process stages, define relevant target markets and identify solutions for individual requirements.



**Development & Design**

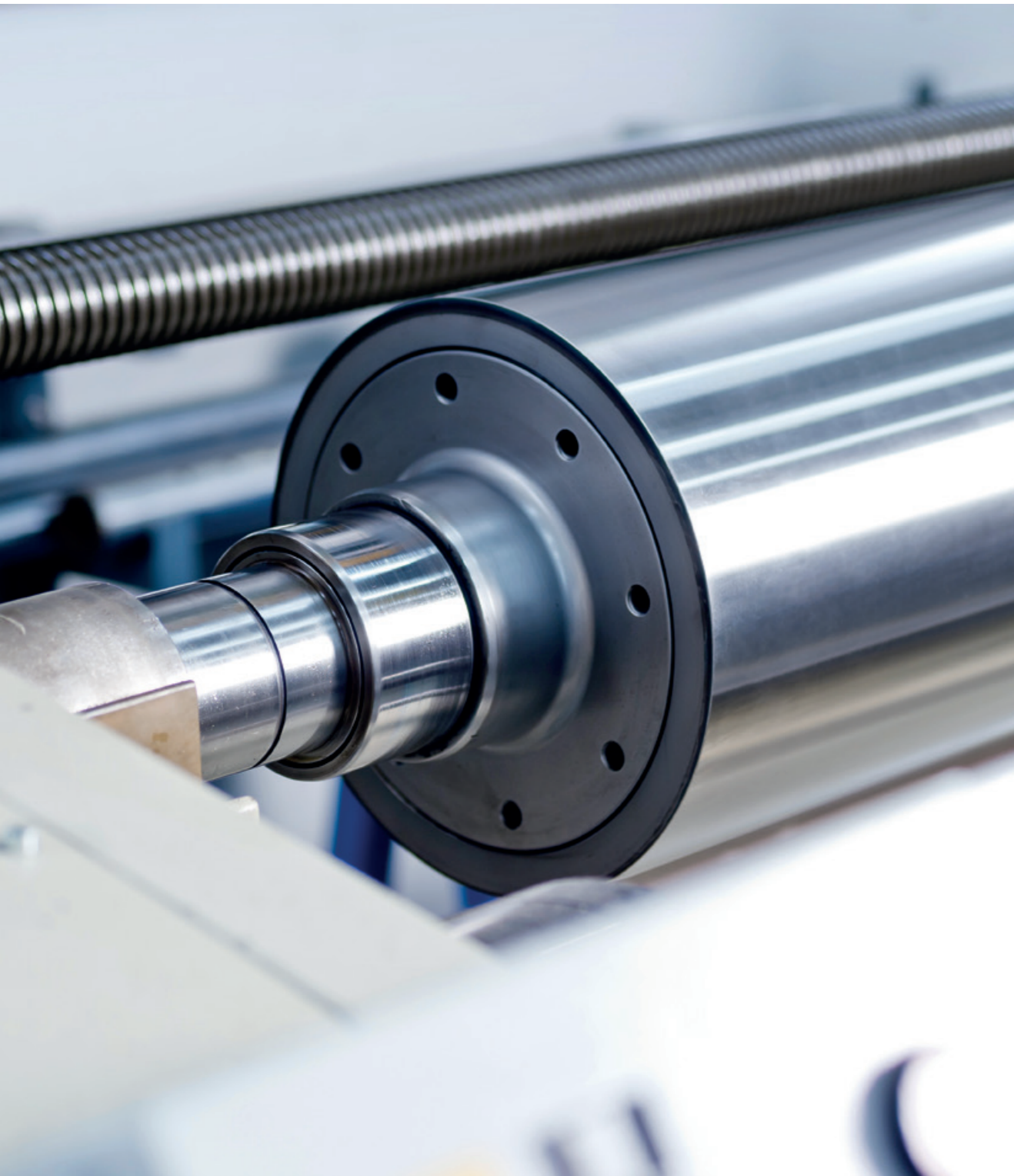
The creative implementation of your surface design is made by experienced designers and experts in consideration of all relevant technical details.



**Layouts**

We support our customers through their own decision-making process with digital layouts and 3D prints to achieve the preferred design.





**Technology** that drives. We focus on technical expertise and high quality. In each of our production steps.



**Rollers & steel core production**

For decades we have been producing printing and embossing rollers for a wide variety of applications as well as steel cores and sleeves especially designed for rotogravure printing.



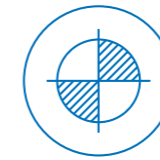
**Technical consulting**

We provide tailored technical consulting and offer our customers individual solution proposals – goal-oriented and competent.



**Embossing rollers & sleeves**

We produce tailor-made embossing rollers and sleeves with the latest laser and etching technologies. This enables us to precisely reproduce even the smallest structures.



**Technical centre**

Our in-house technical centre provides the opportunity to produce sample collections on your original materials.





## We trust in **international group strength**

As part of Matthews International Corporation, we belong to a strong global network. From our EMEA headquarters in Duisburg, we guarantee excellent development, implementation and coordination of international projects. We are a reliable partner for your business operations across all borders.

### **DID YOU KNOW?**

The Matthews International Corporation employs over 11,000 employees in more than 25 countries on five continents.





Matthews International GmbH  
Location Vreden  
Gutenbergstraße 1-3  
48691 Vreden | Germany  
T: +49 2564 120

UNGRICHT GMBH + CO KG  
Karstraße 90  
41068 Mönchengladbach | Germany  
T: +49 2161 3590

WETZEL GmbH  
Solvaystraße 31  
79639 Grenzach-Wyhlen | Germany  
T: +49 7624 301 0

[info@su-surfaces.com](mailto:info@su-surfaces.com)  
[su-surfaces.com](http://su-surfaces.com)



**Matthews**  
INTERNATIONAL®

SAUERESSIG UNGRICH is a Matthews International brand.